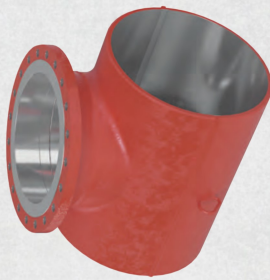


# FITTINGS THAT WORK AS HARD AS WE DO.

Our fittings deliver unwavering quality. We offer standard and custom designs for both onshore and offshore applications, and a wide variety of configurations so you can be sure you get what you need every time. Plus, our fittings are manufactured to ISO9001:2015 and ASME Section VIII, Div. 1—all engineered, fabricated and inspected in-house.

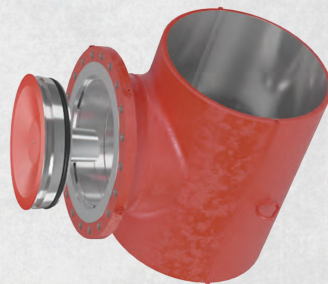
## HOT TAP FITTINGS

- 01 **DESIGNED** to eliminate fabrication stress risers
- 02 **ENGINEERED** with integral fitting reinforcement
- 03 **AVAILABLE** in material grades from A234 WPB to WPHY-70
- 04 **STRONG** quality with no run-to-branch weld



## LINE STOP FITTINGS

- 01 **SURELOC®** flange system
- 02 **SURELOC®** plug held in place by segment rings
- 03 **O-RING** that creates strong seal
- 04 **SCARFED** nipple plug



## SPECIALTY FITTINGS



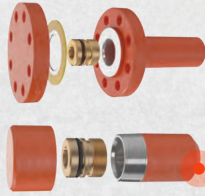
01 DOUBLE-HUB FITTINGS



02 SPHERICAL 3-WAY TEES



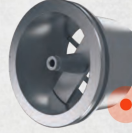
03 3-WAY TEES



04 PURGE & EQUALIZATION FITTINGS



05 3-WAY TEE FLOW THROUGH PLUGS



06 FLOW THROUGH PLUGS

## STOCKED AND READY SO YOU WASTE ZERO TIME.

It's our mission to always provide better support for your operation. We work hard to maintain a wide-ranging inventory of pipeline-related components—always available for same-day or

next-day shipment. That means you get access to a wide selection of fittings, flanges, flow-through plugs and other essentials available in a variety of sizes, materials and configurations.